

# Tigh-Na-Acha

8 Western Road, Tobermory,  
Isle of Mull, PA75 6RA.

Holidays@tigh-na-acha.co.uk

<https://tigh-na-acha.co.uk>

The Isle of Mull is the second largest Scottish Island and probably the most beautiful. Mull's position in the Inner Hebrides means it is only a 40 minute ferry journey from the Scottish mainland port of Oban, but is far enough away to remain undamaged by tourism. Populated by around 2,500 people, this unspoilt island is home to wildlife unusual to mainland Britain including sea eagles, white tail eagles, golden eagles, otters, puffins and whales.

Much of the island was probably generated by volcanic activity when 60 million years ago a volcano, now Ben More (a Munro standing 966m) exploded and scattered lava adding another layer of geological interest. There are many interesting archaeological sites, standing stones, stone circles, remains of settlements and stone buildings to be found all over Mull enhancing the mystical feel of the island.

Tobermory is located at the north end of the Isle of Mull. During the 18<sup>th</sup> Century the settlement was used as a fishing port due to the natural harbour. History shows that as far back as 1588 the cove was used as a shelter for a

Spanish galleon which mysteriously caught fire and sunk taking its cargo of gold coins and treasures which brings divers back to Mull.



Now Tobermory is by far the largest village on the island and as you can see, colourful houses, cafés, pubs and shops adorn the picture postcard harbour front.

Whether you are walking, fishing, golfing, nature watching, relaxing or exploring, Tobermory makes the perfect place stay with everything on the island within easy reach.

The cottage was built in 1978 and is located some way up Druim na Sroine-Cruime, the hill which helps to protect the harbour.

From the cottage there are stunning views across the harbour where there are always many colourful boats moored.

On the far side of the harbour you can see Aros Park, National Trust Scotland land, with its trees, lakes and waterfalls.



Look South and see some of Ben More and some of Mull's other mountains and South West over Calve Island down the Sound of Mull where the views are often glorious.

The main street has many shops, restaurants, bars and coffee shops. The shops provide (amongst many other things) provisions, Arts and Crafts, children's games, warm clothes, fishing tackle and a pharmacy. There is also a museum and a dry cleaners.

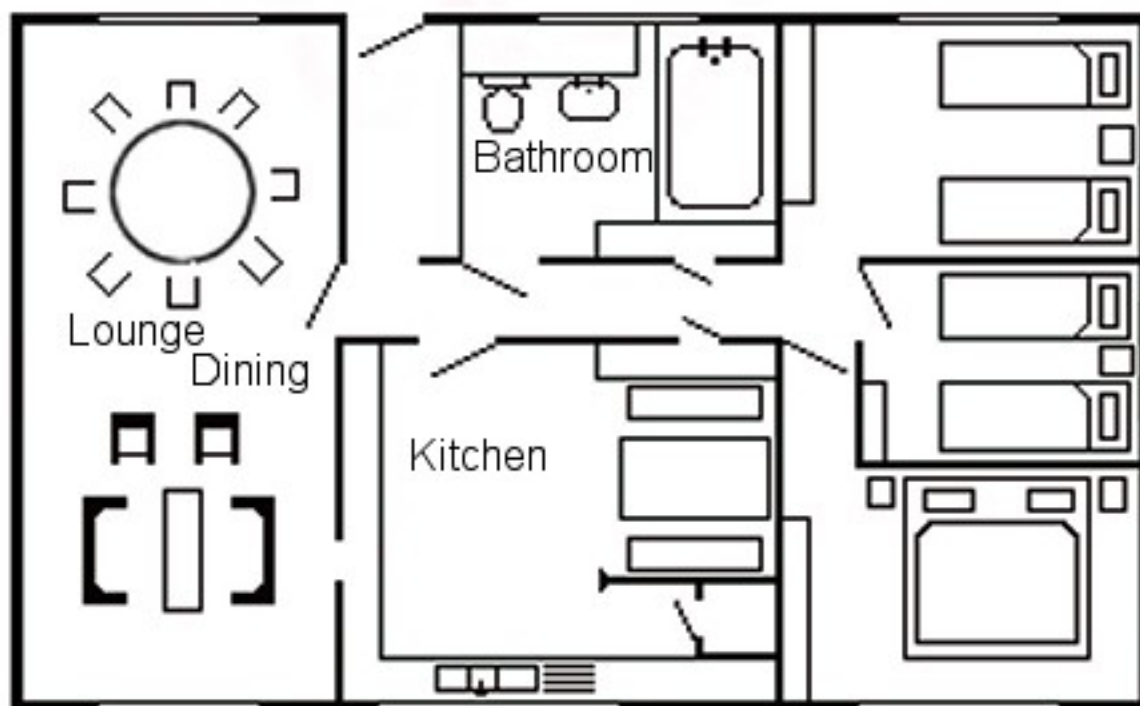


There are always goings-on in the harbour to watch.

On the left hand side as you look out to sea you will find the main pier which houses a great local fish café / restaurant. In the middle is the market for provisions, and on the right hand side is the Ledaig car park, Tobermory Distillery, Petrol station and Visitor Centre where you can book day trips to other parts of the island, or even other islands.

## About the cottage

Tigh-Na-Acha is comfortably furnished and well equipped, here is the floor plan. Please see <https://tigh-na-acha.co.uk/Accommodation.shtml> for an interactive floor plan with more detail, pictures of all the rooms and views from the outside.



### The Lounge / Living room is carpeted and includes:

- Real wood / coal burning fire
- Convection heaters
- Large dining table with chairs
- Television with Freeview, will play videos from a USB stick
- DVD / Video player and Radio / CD / Tape player
- Comfortable sofa and separate easy chair
- Large coffee table
- Serving hatch into the Kitchen
- Terrific views over Tobermory Harbour
- Selection of fiction books and games
- Selection of local maps and books about Mull
- Internet connection via wifi router, details attached to the router
- Alexa smart speaker useful for weather updates, worldwide radio, etc.

**The kitchen benefits from:**

- Breakfast area seating
- Electric oven and hob (please turn on at the wall)
- Sink, washing up liquid, dish clothes, drying up clothes
- Kettle
- Fridge / Freezer
- Microwave
- Washing machine
- Cooking utensils, knives, tin openers, etc.
- Cutlery, crockery, cups and dishes
- French press / cafetière for ground coffee
- Immersion heater switch

**The bedrooms contain:**

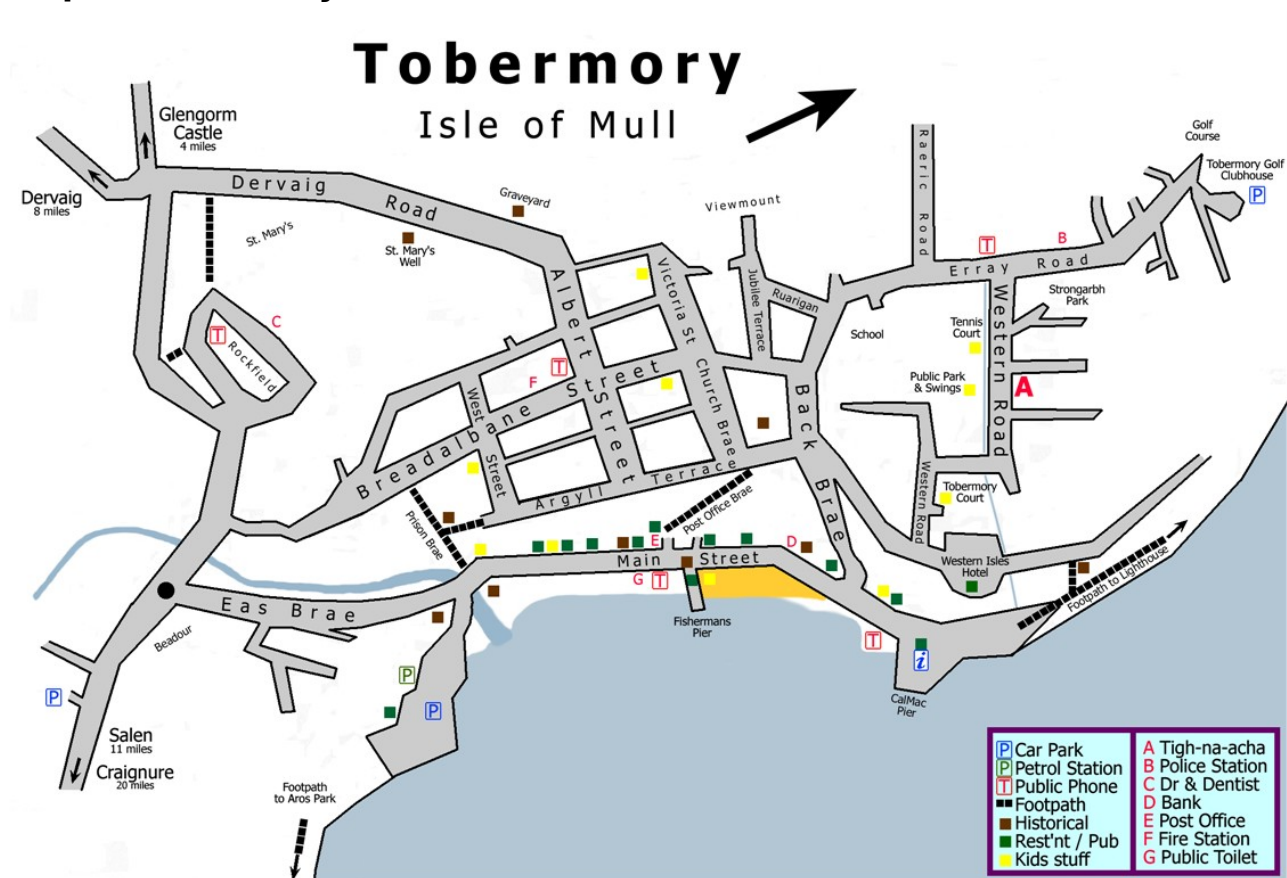
- One double bed
- Four single beds
- Built-in wardrobes in each
- Bedside tables in each
- All bed linen and pillows are provided

**The bathroom has:**

- Bath
- Bath towels are provided
- Power Shower
- Extractor fan
- Toilet
- Wash basin
- Shaver point
- Wall mounted heater

An immersion heater supplies the hot water, and convection heaters are provided in the living room, bathroom and all bedrooms.

## Map of Tobermory



## Cottage Guidelines

1. The cottage will be available from 15:00 on the Saturday you start your holiday.
2. Please vacate the cottage by 11:00 on your final day.
3. Cars can be parked off the road in front of the cottage.
4. A folder is in the kitchen drawer containing instructions for the equipment.
5. The dustman collects each Thursday. Please could you put the bin by the road and return it when emptied. Thank you again!
6. Please note that pets cannot be accommodated.
7. Please enjoy yourselves, and if you have any questions, please get in touch.